

Location: _____



T1460-PB

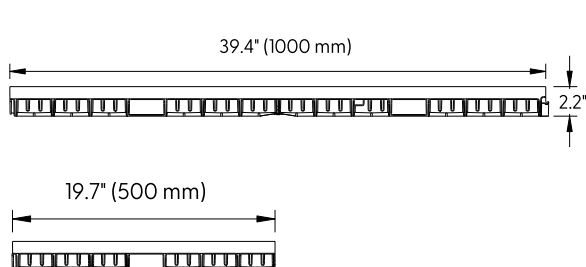
**4" Glass Reinforced Polyester (GRP)
Shallow Channel with No Edge Rail**

Specification: MIFAB® T1460-PB series shallow channels shall be 39.4" (1000 mm) long with a 4" (100 mm) internal width and shallow bottom. Channels are made from high strength Glass Fiber Reinforced Polyester (GRP) with no edge rail. MIFAB's GRP channels are designed with a sealant groove in accordance with the EN1433 Standard, Section 7.5 - Connecting Channel Elements. This Standard requires all channels to have the joint between channels to be designed in such a way that it can be permanently sealed. Sealant manufacturers recommend a 3/8" bead, which the MIFAB GRP conforms to.

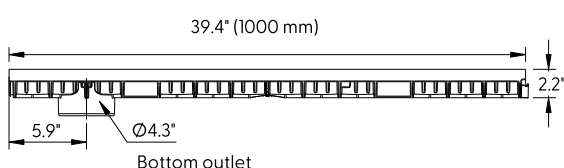


System is available with 4" preformed bottom outlet. End caps and catch basins are available accessories. Grates (separate specification sheets) are available in Load Class A-C in a variety of materials. Grates utilize the patented "Clipfix" locking mechanism.

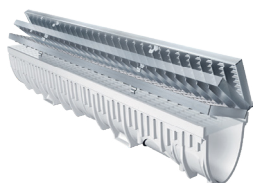
CHANNEL MODEL NUMBER	FLOW GPM	WEIGHT (LBS.)
T1460N-PB	55	4.12
T1460N-PB-500	55	2.05
T1460N-PB-BO4	55	4.12



T1460N-PB



**T1460N-PB-BO4
with 4" bottom outlet**



CLIPFIX ADVANTAGE

The MEA Glass Fiber Reinforced Polyester (GRP) channels have been designed for our universal CLIPFIX grate locking mechanism. The system (channel and grate) provide longitudinal shift protection.

CALIFORNIA PROPOSITION 65 WARNING. This product contains chemicals known to the State of California to cause cancer and birth defects or other reproductive harm.

Job Name: _____

Page No: _____

Section No: _____

Contractor: _____

Schedule No: _____

Purchase Order No: _____

MIFAB reserves the right to make changes in material and design without formal notice and obligation.

USA: 1-877-903-7246 www.trenchdrainsupply.com



2024-05-01

Location: _____

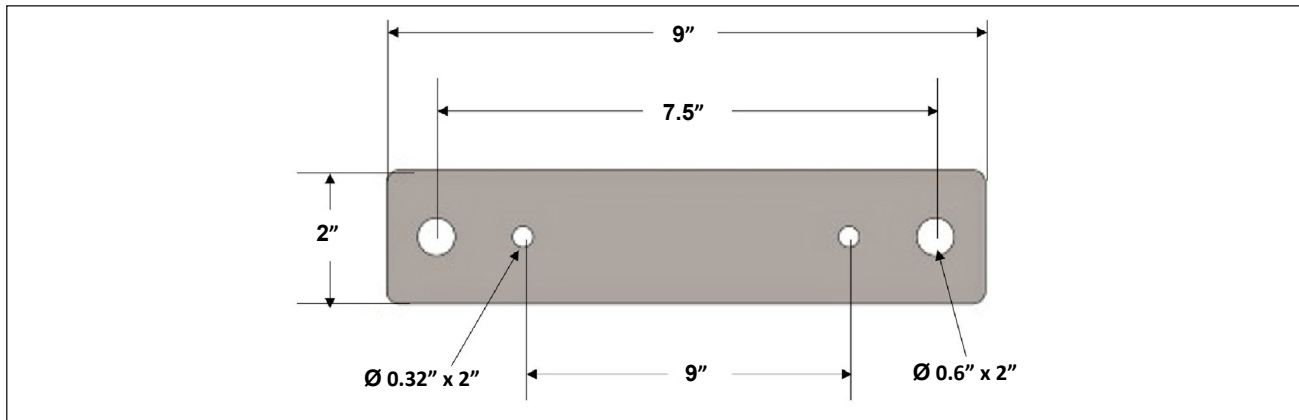


T1460N-REB

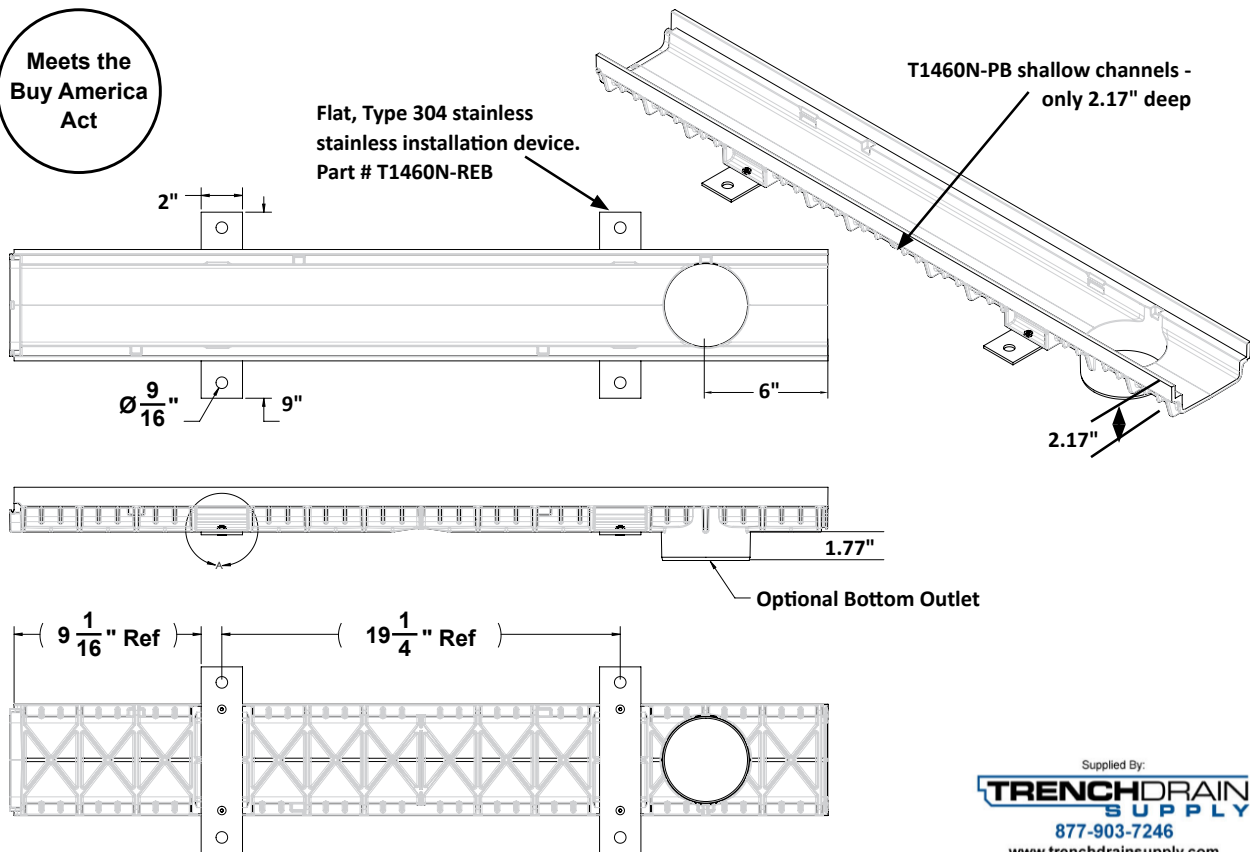
**INSTALLATION DEVICE FOR
ALL T1460N GRP CHANNELS**

Specification: MIFAB® T1460N-REB Type 304 stainless steel installation device with mounting holes.

Function: Used to secure the T1460N shallow channels to decking. Holes are provided with the T1460N-REB to bolt to the underside of the T1460N channels and also to secure to the decking.



Installation Device for shallow T1460N channels



Supplied By:
**TRENCH DRAIN
SUPPLY**
877-903-7246
www.trenchdrainsupply.com

CALIFORNIA PROPOSITION 65 WARNING. This product contains chemicals known to the State of California to cause cancer and birth defects or other reproductive harm.

Job Name: _____ Page No: _____
Section No: _____ Contractor: _____
Schedule No: _____ Purchase Order No: _____

MIFAB reserves the right to make changes in material and design without formal notice and obligation. USA: 1-800-465-2736 www.mifab.com CAN: 1-800-387-3880

2023-04-25

Location: _____

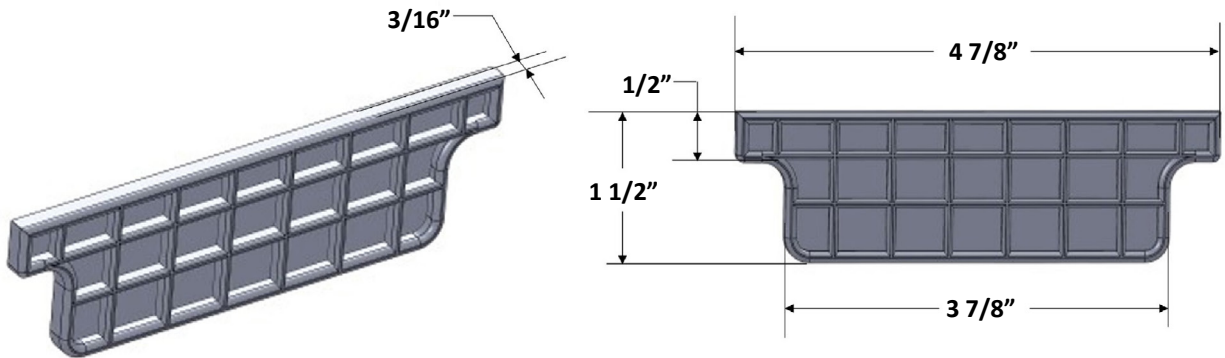


T1460-PEC

END CAP FOR T1460N GRP CHANNELS

Specification: MIFAB® T1460-PEC plastic closed end cap for T1460N GRP channels.

Function: Used as a closed end cap for the T1460N GRP channels.



Supplied By:
**TRENCH DRAIN
SUPPLY**
877-903-7246
www.trenchdrainsupply.com

CALIFORNIA PROPOSITION 65 WARNING. This product contains chemicals known to the State of California to cause cancer and birth defects or other reproductive harm.

Job Name: _____ Page No: _____

Section No: _____ Contractor: _____

Schedule No: _____ Purchase Order No: _____

MIFAB reserves the right to make changes in material and design without formal notice and obligation. **USA: 1-800-465-2736 www.mifab.com CAN: 1-800-387-3880**

2023-04-25

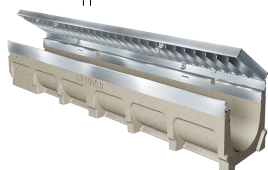
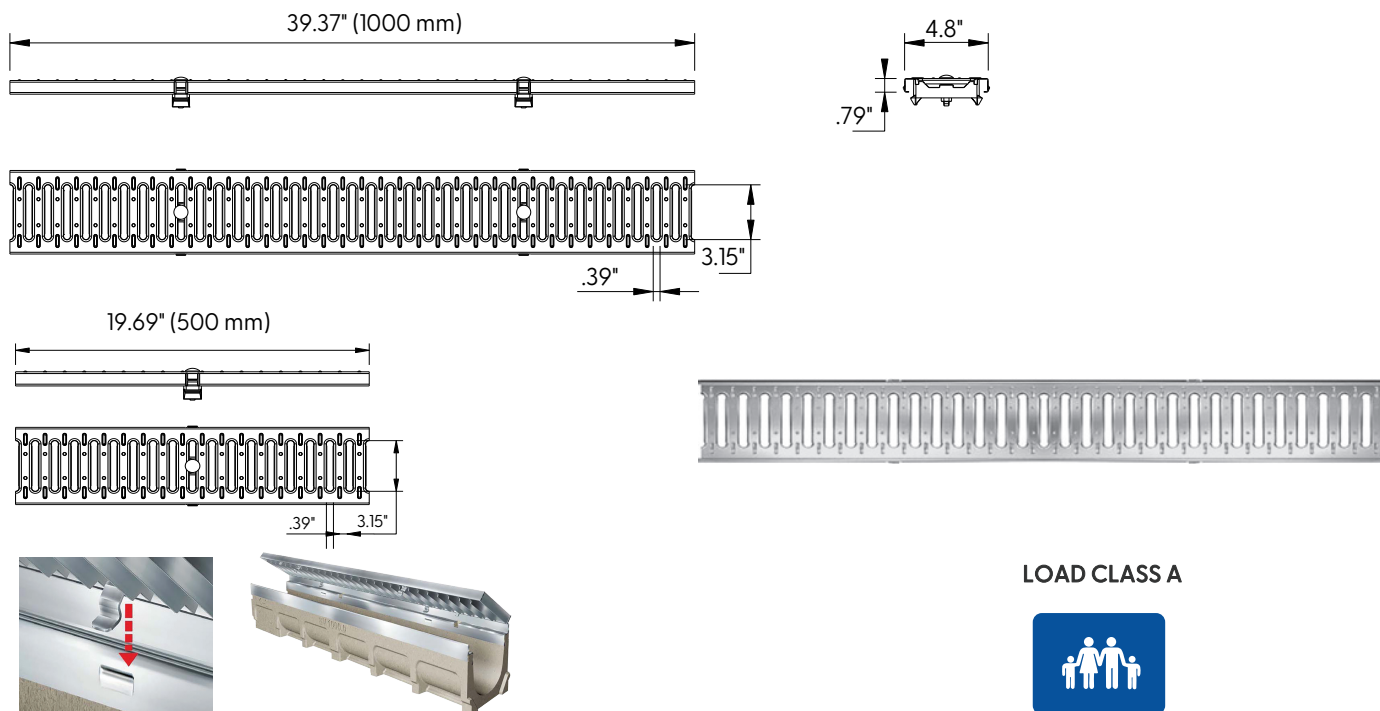
Location:



Galvanized Steel Slotted Grate to suit 4" clear opening channels



Specification: T100-PGA-13-FS galvanized slotted steel grates are independently certified to meet Load Class A tested in accordance with EEN1433 (3,372 lbs. (15kN)). The grate length is 39.37" (1 m). The grates utilize the patented "Clipfix" grate locking mechanism. The system (channel and grate) provides longitudinal shift protection. Optional (.5 m) grates are also available in Load Class A (Part # T100-PGA-13-FS-500).



LOAD CLASS A



A: EN 1433 - 3,372 lbs.,
15kN, 70 PSI

CLIPFIX ADVANTAGE

The MEA polymer concrete and GRP channels are designed for our universal CLIPFIX grate locking mechanism. The system (channel and grate) provides longitudinal shift protection.

GRATE MODEL NUMBER	LENGTH	USED WITH
T100-PGA-13-FS	39.37" (1000 mm)	T1500 Concrete Channel
T100-PGA-13-FS-500	19.69" (500 mm)	T1500 Concrete Channel
TP100-PGA-13-FS	39.37" (1000 mm)	T1400 Plastic Channel or T1330 Aluminum Channel
TP100-PGA-13-FS-500	19.69" (500 mm)	T1400 Plastic Channel or T1330 Aluminum Channel

Supplied By:
**TRENCHDRAIN
SUPPLY**
877-903-7246
www.trenchdrainsupply.com

Job Name: _____

Page No: _____

Section No: _____

Contractor: _____

Schedule No: _____

Purchase Order No: _____

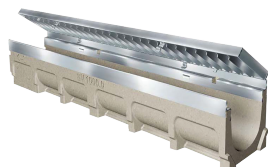
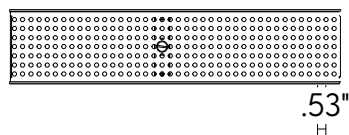
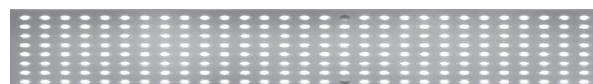
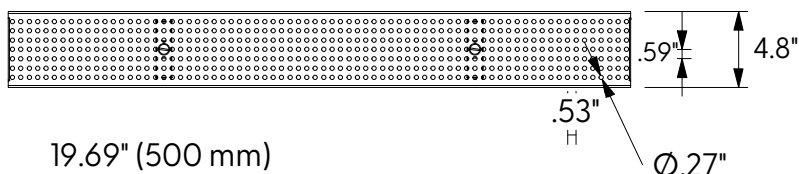
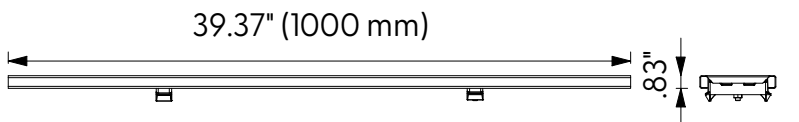
Location:



Galvanized Steel Perforated Grate to suit 4" clear opening channels



Specification: T100-PGA-13-FP galvanized steel perforated grates are independently certified to meet Load Class A tested in accordance with EN 1433 (3,372 lbs (15kN)). The grate length is 39.37" (1 m). The grates utilize the patented "Clipfix" grate locking mechanism. The system (channel and grate) provides longitudinal shift protection. Optional .5 meter grates are also available in Load Class A (Part # TP100-PGA-13-FP-500).



CLIPFIX ADVANTAGE

The MEA polymer concrete and GRP channels are designed for our universal CLIPFIX grate locking mechanism. The system (channel and grate) provides longitudinal shift protection.

LOAD CLASS A



EN 1433 - 3,372 LBS.,
15kN, 70 PSI

Compliance



ADA



HEELPROOF

GRATE MODEL NUMBER	LENGTH	USED WITH
T100-PGA-13-FP	39.37" (1000 mm)	T1500 Concrete Channel
T100-PGA-13-FP-500	19.69" (500 mm)	T1500 Concrete Channel
TP100-PGA-13-FP	39.37" (1000 mm)	T1400 Plastic Channel or T1330 Aluminum Channel
TP100-PGA-13-FP-500	19.69" (500 mm)	T1400 Plastic Channel or T1330 Aluminum Channel

Supplied By:

**TRENCHDRAIN
SUPPLY**

877-903-7246

www.trenchdrainsupply.com

Job Name: _____

Page No: _____

Section No: _____

Contractor: _____

Schedule No: _____

Purchase Order No: _____

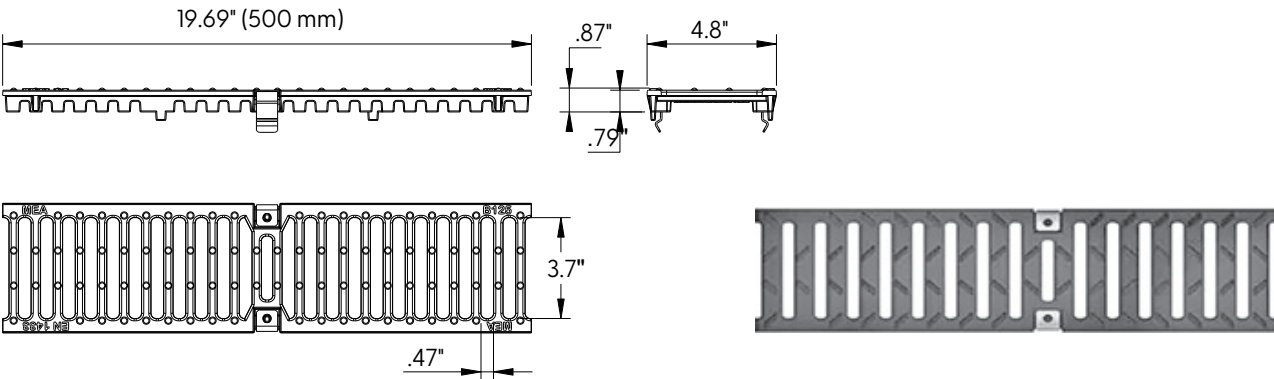
Location:



Ductile Iron Slotted Grate
to suit 4" clear opening channels



Specification: T100-PGC-4 ductile iron grates are independently certified to meet Load Class C tested in accordance with EN 1433 56,200 lbs. 250kN. The grate length is 19.69" (.5 m). The grates utilize the patented "Clipfix" grate locking mechanism. The system (channel and grate) provides longitudinal shift protection.



LOAD CLASS C



EN 1433 - 56,200 LBS.,
250kN, 1160 PSI

CLIPFIX ADVANTAGE
The MEA polymer concrete and GRP channels are designed for our universal CLIPFIX grate locking mechanism. The system (channel and grate) provides longitudinal shift protection.

GRATE MODEL NUMBER	LENGTH	USED WITH
T100-PGC-4	19.69" (500 mm)	T1500 Concrete Channel
TP100-PGC-4	19.69" (500 mm)	T1400 Plastic Channel or T1330 Aluminum Channel

Supplied By:
**TRENCHDRAIN
SUPPLY**
877-903-7246
www.trenchdrainsupply.com

Job Name: _____	Page No: _____
Section No: _____	Contractor: _____
Schedule No: _____	Purchase Order No: _____

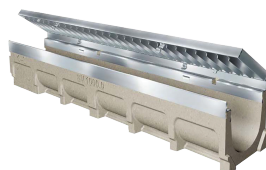
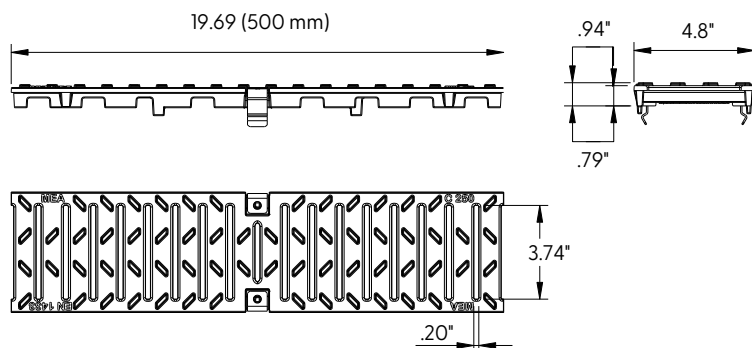
Location:



Ductile Iron Slotted Grate to suit 4" clear opening channels



Specification: T100-PGC-4-HP ductile iron grates are independently certified to meet Load Class C tested in accordance with EN 1433 56,200 lbs. 250kN. The grate length is 19.69" (.5 m). The grates utilize the patented "Clipfix" grate locking mechanism. The system (channel and grate) provides longitudinal shift protection.



CLIPFIX ADVANTAGE

The MEA polymer concrete and GRP channels are designed for our universal CLIPFIX grate locking mechanism. The system (channel and grate) provides longitudinal shift protection.

LOAD CLASS C



EN 1433 - 56,200 LBS.,
250kN, 1160 PSI

Compliance



HEELPROOF

Supplied By:

**TRENCHDRAIN
SUPPLY**
877-903-7246
www.trenchdrainsupply.com

GRATE MODEL NUMBER	LENGTH	USED WITH
T100-PGC-4-HP	19.69" (500 mm)	T1500 Concrete Channel
TP100-PGC-4-HP	19.69" (500 mm)	T1400 Plastic Channel or T1330 Aluminum Channel

Job Name: _____

Page No: _____

Section No: _____

Contractor: _____

Schedule No: _____

Purchase Order No: _____

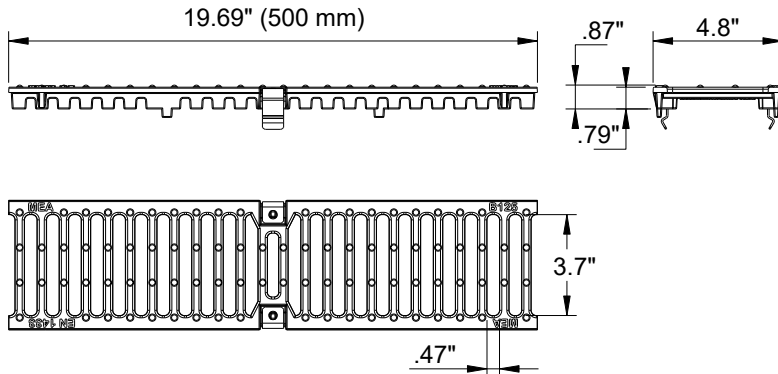
Location: _____



Ductile Iron Slotted Grate to suit 4" clear opening channels



Specification: T100-PGE-4 ductile iron slotted grates are independently certified to meet Load Class E tested in accordance with EN 1433 134,800 lbs. 600kN. The grate length is 19.69" (.50 m). The grates utilize the patented "Clipfix" grate locking mechanism. The system (channel and grate) provides longitudinal shift protection.



CLIPFIX ADVANTAGE

The MEA polymer concrete and GRP channels are designed for our universal CLIPFIX grate locking mechanism. The system (channel and grate) provides longitudinal shift protection.

LOAD CLASS E



EN 1433
134,800 LBS.,
600kN, 2,785 PSI

Supplied By:
**TRENCH DRAIN
SUPPLY**
877-903-7246
www.trenchdrainsupply.com

GRATE MODEL NUMBER	LENGTH
T100-PGE-4	19.69" (500 mm)

Job Name: _____

Page No: _____

Section No: _____

Contractor: _____

Schedule No: _____

Purchase Order No: _____

Revision Date: 2023-02-06

CALIFORNIA PROPOSITION 65 WARNING. This product contains chemicals known to the State of California to cause cancer and birth defects or other reproductive harm.

MIFAB reserves the right to make changes in material and design without formal notice and obligation.

USA: 1-800-465-2736 www.mifab.com CAN: 1-800-387-3880

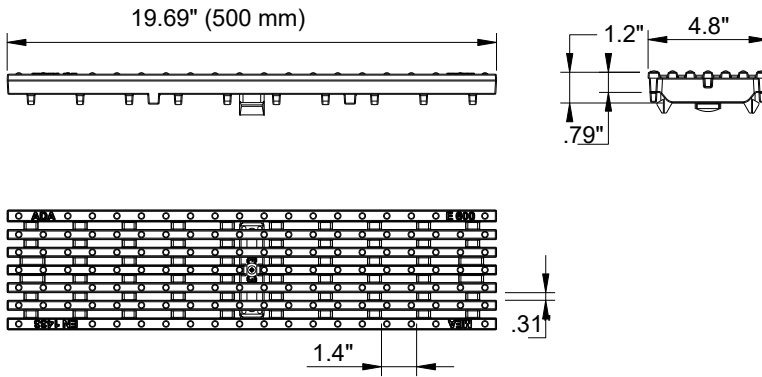
Location: _____



Ductile Iron Longitudinal Slotted Grate to suit 4" clear opening channels



Specification: T100-PGE-4-ADA ductile iron longitudinal slotted grates are independently certified to meet Load Class E tested in accordance with EN 1433 134,800 lbs. 600kN. The grate length is 19.69" (.50 m). The grates utilize the patented "Clipfix" grate locking mechanism. The system (channel and grate) provides longitudinal shift protection.



CLIPFIX ADVANTAGE

The MEA polymer concrete and GRP channels are designed for our universal CLIPFIX grate locking mechanism. The system (channel and grate) provides longitudinal shift protection.

LOAD CLASS E



EN 1433
134,800 LBS.,
600kN, 2,785 PSI

Compliance



ADA



HEELPROOF

Supplied By:
**TRENCH DRAIN
SUPPLY**
877-903-7246
www.trenchdrainsupply.com

GRATE MODEL NUMBER	LENGTH
T100-PGE-4-ADA	19.69" (500 mm)

Job Name: _____

Page No: _____

Section No: _____

Contractor: _____

Schedule No: _____

Purchase Order No: _____

Revision Date: 2023-02-06

CALIFORNIA PROPOSITION 65 WARNING. This product contains chemicals known to the State of California to cause cancer and birth defects or other reproductive harm.

MIFAB reserves the right to make changes in material and design without formal notice and obligation.

USA: 1-800-465-2736 www.mifab.com CAN: 1-800-387-3880

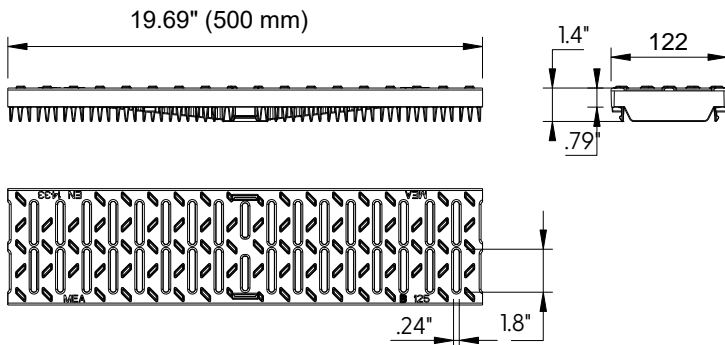
Location:



Plastic Slotted Grate to suit 4" clear opening channels



Specification: T100-PGC-HPP plastic grates are independently certified to meet Load Class C tested in accordance with EN 1433 56,200 lbs. 250kN. The grate length is 19.69" (.5 m). The grates utilize the patented "Clipfix" grate locking mechanism. The system (channel and grate) provides longitudinal shift protection.



CLIPFIX ADVANTAGE

The MEA polymer concrete and GRP channels are designed for our universal CLIPFIX grate locking mechanism. The system (channel and grate) provides longitudinal shift protection.

LOAD CLASS C



EN 1433 - 56,200 LBS.,
250kN, 1160 PSI

Compliance



HEELPROOF

Supplied By:
**TRENCHDRAIN
SUPPLY**
877-903-7246
www.trenchdrainsupply.com

GRATE MODEL NUMBER	LENGTH	USED WITH
T100-PGC-3-FP-500	19.69" (500 mm)	T1500 Concrete Channel
T100-PGC-3-FP-500	19.69" (500 mm)	T1400 Plastic Channel or T1330 Aluminum Channel

Job Name: _____

Page No: _____

Section No: _____

Contractor: _____

Schedule No: _____

Purchase Order No: _____

CALIFORNIA PROPOSITION 65 WARNING. This product contains chemicals known to the State of California to cause cancer and birth defects or other reproductive harm.